

Village of Bridgeview

NPDES Permit No. ILR40 0301

Annual Facility Inspection Report Attachment 1

Year 22

March 2024 to March 2025

May 30, 2025

Content:	Page Number:
Attachment Title Page	1
Item A: Description of Changes to BMPs	2
Item B: Status of compliance with permit conditions and assessment of minimum control measures	2
Item C: Results of information collected and analyzed, monitoring data (if any).	6
Item D: Summary of stormwater activities you plan to undertake during the next reporting cycle (and implementation schedule).	6
Item E: Notice that you are relying on another governmental entity to satisfy some of your permit obligations (if applicable).	6
Item F: List of construction projects that your entity has paid for during the reporting period.	6
Sample Documentation for Minimum Control Measures	7+

Any questions or comments regarding this report shall be directed to either of the following:

Mr. William Green, Director of Village Projects – Village of Bridgeview
708-496-6793 or wgreen@villageofbridgeview.com

Mr. Thomas Brandstedt, PE, Novotny Engineering
630-878-1792 or tbrandstedt@novotnyengineering.com

Village of Bridgeview, NPDES Permit No. ILR40 0301
Annual Facility Inspection Report - Supplemental Information
March 2023 to March 2024
June 11, 2024

Item A: Description of Changes to BMPs

The following changes have been made in Village BMPs for the next reporting cycle:

No changes this cycle. The Village last updated its Storm Water Management Program (SWMP) on 5/17/19 with some minor revisions and corrections.

**Item B: Status of compliance with permit conditions
and assessment of minimum control measures**

The Village believes that the BMPs completed within the reporting period are appropriate for the permit conditions. The status of each BMP is as follows:

A. Public Education and Outreach

1. A1: Distributed Paper Material (Newsletter)

The Village's Newsletter has been used to reach out to residents and businesses about a variety of topics (see enclosed samples). Articles or information appear several times throughout the cycle. Several sample newsletters are included highlighting village cleanup days. *Newsletters allow for "fair" access and are available to all in the community.*

2. A4: Community Events (Annual Cleanup Days)

The Village held its twice annual Village-Wide Cleanup Days in the Spring (April 1, 2024) and Fall (September 28, 2024). All residents can participate so this is offered "fairly" to all in the community. The next cleanup day is scheduled for April 26, 2025. See enclosed newsletter information. This BMP coincides with BMP B7.

3. A6: Other Public Education (Website and Facebook)

The Village Website and Facebook used to post information for Public Works throughout the reporting cycle (samples enclosed).

B. Public Participation and Involvement

4. B4: Public Hearing (Meeting)

The Village last held an informational Public Hearing during the previous reporting cycle on March 6, 2024. At this meeting the status of the Village's compliance with NPDES Phase II was reported. The next public meeting is planned for the next reporting cycle.

5. B7: Other Public Involvement (Annual Cleanup Day)

The Village held its twice annual Village-Wide Cleanup Days in the Spring (April 1, 2024) and Fall (September 28, 2024). All residents can participate so this is offered "fairly" to all in the community. The next cleanup day is scheduled for April 26, 2025. See enclosed newsletter information. This BMP coincides with BMP A4.

C. Illicit Discharge Detection and Elimination

6. C1: Storm Sewer Map Preparation

The Village has an up-to-date Storm Sewer Map on which the outfalls are numbered, and storm sewer sizes are included with lengths to scale. The map was updated during the reporting cycle and will be reviewed during the next for possible updates.

7. C2: Regulatory Control Program (Ordinance)

The Village has an ordinance (Article 13) related to Illicit Discharge Detection and Elimination and relies on a similar ordinance available from the Metropolitan Water Reclamation District of Greater Chicago (MWRD) for enforcement.

8. C7: Visual Dry Weather Screening

The Village completed dry weather Outfall Inspections of its outfalls during the reporting cycle in December 2024. No problem outfalls were reported. The inspections are planned for the next reporting cycle.

9. C10: Other Illicit Discharge Controls (Visual Monitoring Inspections)

Since the Village population is under 25,000, it has opted for visual monitoring of its upstream and downstream watercourse locations. Visual Monitoring Inspections at upstream and downstream locations were included with the outfall inspections in this reporting cycle. Monitoring is typically included during the outfall inspections and is again scheduled for the next reporting cycle. The goal is to conduct these inspections on an annual basis.

D. Construction Site Runoff Control

10. D1: Regulatory Control Program (Ordinance)

There have been no changes to the codes during this cycle, but the Village continues to enforce its regulatory control program for construction site runoff control. Village

Ordinance #6-19 provides for Erosion and Sediment Control. Also, Article 4 of the MWRD's Watershed Management Ordinance (WMO) which became effective on May 1, 2014, is used to enforce soil erosion and sediment control requirements with development.

11. D2: Erosion and Sediment Control BMPs

Erosion and Sediment Control BMPs are required for all developments that exceed one acre in size.

12. D4: Site Plan Review Procedures

Development projects are reviewed under local and District ordinances by Village Staff and engineering consultants, especially regarding stormwater and erosion and sediment control measures. Projects over one acre are required to obtain a Notice of Intent prior to construction. A SWPPP is required with plan sets. Robinson Engineering performs Plan Reviews for the Village as they become necessary. The Village requires Weekly inspection reports from developers of active projects. The Village performs audit inspections as needed. The following plan reviews were conducted during the reporting cycle:

- None this reporting period.

13. D6: Site Inspection/Enforcement Procedures

Weekly inspection reports are required from developers of active projects. Periodic or surprise audit inspections are conducted by the Village or its consultant as needed. The Village performs audit inspections as needed.

E. Post-Construction Runoff Control

14. E2: Regulatory Control Program (Ordinance)

There have been no changes to the codes during this cycle, but the Village continues to enforce its regulatory control program for post construction runoff control. Village Ordinance #6-20 provides for Post Construction Storm Water Runoff Control. Also, Article 4 of the MWRD's Watershed Management Ordinance (WMO) which became effective on May 1, 2014, is used to enforce soil erosion and sediment control requirements with development.

15. E3: Long Term O&M Procedures

These are required and reviewed where applicable during the site plan review process and implemented post construction. Controlled burns were performed in March, April, May, June, July, September and December 2024 and January 2024 at the Bridgeview Court Nature Area and Courthouse Prairie. This promotes healthy natural vegetation and wetland plantings.

16. E4: Pre-Construction Review of BMP Designs

The ordinance requirements are enforced during the site plan review stage of a development. The site plan reviews include a review of the BMP designs.

17. E5: Site Inspections During Construction

Weekly inspection reports are required from developers of active projects. Periodic or surprise audit inspections are conducted by the Village or its consultant as needed.

18. E6: Post-Construction Inspections

Stormwater management systems are inspected during the year depending on staff availability. Inspected storm sewers and structures that are found to need maintenance are cleaned, vacuumed, or jetted as needed.

F. Pollution Prevention and Good Housekeeping

19. F1: Employee Training Program

The goal is to conduct at least one training session per reporting cycle. The Public Works staff typically discusses proper procedures for salt storage and spreading, snow plowing, disposal of oil, and handling of solvents. Snow plowing, and deicing practices are reviewed annually. Training on snowplowing and salt spreading is typically conducted in November of each year.

20. F2: The Inspection and Maintenance Program

The inspection and maintenance programs include Routine maintenance of Village streets, storm sewers, ditches, and stormwater facilities as part of the Public Works responsibilities. This includes sweeping, vacuuming, jetting, repair, debris and branch and leaf collection, etc.

- Deicing materials are stored in a permanent facility.
- All fertilizers, pesticides, or other chemicals are stored indoors.

21. Street-sweeping was performed in April through October of the reporting period.

22. Catch Basins are cleaned yearly during the reporting period. The Village has cleaned the tops of all catch basins during street sweeping at least once during the reporting cycle.

23. Storm Sewers are inspected and cleaned on an as needed basis during the reporting cycle.

24. Snow Plowing and Deicing of roadways was conducted during the cold weather months. This is performed on a yearly basis.

25. Branch Chipper is used throughout the spring, summer and fall months throughout the Village on a yearly basis.

G. F3 and F4: Municipal Operations Storm Water Control and Waste Disposal

For Municipal Operations Storm Water Control, the Village completed in 2011 a SWPPP and Spill Response Plan for its Maintenance Yard and Operations. The plans did not require any updates during the reporting cycle.

22. F5: Flood Management/Assessment Guidelines

The Village code includes Flood Regulations which enforce floodplain and flood hazard regulations for any development in or near to floodplains. Reviews for such development are handled by Robinson Engineering.

Item C: Results of information collected and analyzed, monitoring data (if any).

No illicit discharges or incidents of non-compliance were identified. No chemical samples were taken.

The U.S. Census Bureau data for the Village of Bridgeview demographics is:

<i>2020 Population Census</i>	<i>17,027</i>
<i>Hispanic Pop. Percentage</i>	<i>15.6%</i>
<i>Asian Pop. Percentage</i>	<i>72.7%</i>
<i>Black Pop. Percentage</i>	<i>32.0%</i>
<i>Two or more Races Pop. Percentage</i>	<i>2.3%</i>
<i>White Pop. Percentage (Not Hispanic or Latino)</i>	<i>4.1%</i>
	<i>59.5</i>

Item D: Summary of stormwater activities you plan to undertake during the next reporting cycle (and implementation schedule).

See the attached Summary that is numbered to correspond with the original Notice of Intent.

Item E: Notice that you are relying on another governmental entity to satisfy some of your permit obligations (if applicable).

Not applicable. The Village of Bridgeview does not rely on another governmental entity to satisfy NPDES permit obligations currently.

Item F: List of construction projects that your entity has paid for during the reporting period.

The following is a list of contracts that the Village let and constructed during this reporting period:

- 2024 Street Resurfacing

Sample Documentation for Minimum Control Measures

The remaining sheets in this report include some available documentation for various Best Management Practices discussed under Item B.

VILLAGE OF BRIDGEVIEW

SUMMARY AND SCHEDULE OF PROPOSED BEST MANAGEMENT PRACTICES

MINIMUM CONTROL MEASURE		PREVIOUSLY COMPLETED	MAR-19	MAR-20	MAR-21	MAR-22	MAR-23	MAR-24	MAR-25	MAR-26
A. Public Education and Outreach on Stormwater Impacts										
A1	Literature Distribution (newsletter; brochure)	X	X	X	X	X	X	X	X	A
A4	Community Events (Village-wide Cleanup Days)	X	X	X	X	X	X	X	X	A
A6	Other Public Education (website)	X	X	X	X	X	X	X	X	A
B. Public Involvement/ Participation										
B4	Public Hearing	X	X	D	X	X	X	X	X	A
B7	Other Public Involvement (Cleanup days; 2/yr)	X	X	X	X	X	X	X	X	A
C. Illicit Discharge Detection and Elimination										
C1	Storm Sewer Map Assessment	X	X	D	D	D	D	D	D	A
	Storm Sewer Map Preparation	X								
	Field Identification of Outfalls	X								
	Storm Sewer Map Update Program	X	X	X	X	X	X	X	X	A
C2	Regulatory Control Program	X								
	- Sewer Use Ordinance	X	X	X	X	X	X	X	X	A
C7	Visual Dry Weather Screening Program	X	X	X	D	D	D	D	D	A
C10	Other Illicit Discharge Controls (Monitoring)	X	X	X	D	D	D	D	D	A
D. Construction Site Storm Water Runoff Control										
D1	Regulatory Control Program	X	X	X	X	X	X	X	X	A
	- Review of Current Ordinances	X	X							A
	- Ordinance Enforcement (Chap 6 - Art 19; WMO - 4)	X	X	X	X	X	X	X	X	A
D2	Erosion and Sediment Control BMP's	X	X	X	X	X	X	X	X	A
D4	Site Plan Review Procedures	X	A	A	A	A	A	X	X	A
D6	Site Inspection/Enforcement Procedures	X	A	A	A	A	A	X	X	A
E. Post-Construction Storm Water Management										
E2	Regulatory Control Program	X	X	X	X	X	X	X	X	A
	- Review of Current Ordinances	X								A
	- Ordinance Enforcement (Chap 6 - Art 19; WMO - 4)	X	X	X	X	X	X	X	X	A
E3	Long Term O&M Procedures	X	X	X	X	X	X	X	X	A
E4	Pre-Construction Review of BMP Designs	X	X	X	X	X	X	X	X	A
E5	Site Inspections During Construction	X	X	X	X	X	X	X	X	A
E6	Post-Construction Inspections	X	X	X	X	X	X	X	X	A
F. Pollution Prevention/Good Housekeeping										
F1	Employee Training Program	X	X	X	X	X	X	X	X	A
F2	Inspection & Maintenance Program	X	X	X	X	X	X	X	X	A
F3 & F4	Municipal Operations for Stormwater Control and Waste Disposal	X	X	X	X	X	X	X	X	A
	- Audit existing BMP's	X	X	X	X	X	X	X	X	A
	- Audit problem areas	X								
	- Plan new BMP's and Procedures	X								
	- Implement Program	X	X	X	X	X	X	X	X	A
F5	Flood Management/Assess Guidelines	X	X	X	X	X	X	X	X	A

A = Future Required Annual Activity
R = Future One-time Required Activity
D = Deferred Activity

X = Completed Activity
X = New Activity

BRIDGEVIEWS



**VILLAGE OF BRIDGEVIEW
MAYOR**

Steven M. Landek

BOARD OF TRUSTEES

Patricia A. Higginson
Kalid Baste
Norma J. Pinion
Michael J. Pticek
Claudette Struzik
Gary D. Lewis

VILLAGE CLERK

John Altar

**VILLAGE CUSTOMER
SERVICE HOURS**

Mon: 8 a.m. - 6 p.m.
Tue: 8 a.m. - 6 p.m.
Wed: 8 a.m. - 8 p.m.
Thu: 8 a.m. - 6 p.m.
Fri: 8 a.m. - 6 p.m.
Sat: 9 a.m. - 1 p.m.
Sun: CLOSED

*Open 56 hours a week
to serve you better!*

7500 South Oketo Ave.
Bridgeview, IL 60455
Village Services: (708) 594-2525
Emergency: 911

ILLINOIS SECRETARY OF STATE GIANNOULIAS VISITS BRIDGEVIEW!

Mayor Landek welcomed the Illinois Secretary of State to the Bridgeview Community Center to cut the ribbon on the "Senior Only" DMV. The Community Center, located at 7902 S. Oketo, is the new home for the full-service walk-in center. "The success of the Senior Only DMV at SeatGeek Stadium has identified the need for ongoing services in Bridgeview. As a village dedicated to serving the needs of its community, we are happy to work with the Secretary of State to continue offering this convenient senior walk-in center for our Bridgeview residents and those of surrounding municipalities," said Mayor Landek.

The "Senior Only" walk-in center moved from Bridgeview's SeatGeek Stadium as the Chicago Red Stars, Chicago Fire, and Chicago Hounds resume full operations at the Stadium for their respective 2024 seasons. According to Mayor Landek, "the facility at the Stadium performed great for the 90-day run. The Stadium has a lot

of team and event activity planned for the year, and keeping the DMV opened would have been challenging."

Illinois Secretary of State Alexi Giannoulias praised the walk-in center operations in front of a crowd of Bridgeview seniors and guests and proceeded to cut the ceremonial ribbon, signaling the grand opening at the Bridgeview Community Center at 10:30am on Tuesday, January 9th.

"We're excited to continue to provide a top-notch service experience specifically tailored to serve seniors at a new location in Bridgeview," Secretary Giannoulias said. "Our Skip-the-Line program delivered great results in 2023, ensuring that all Illinoisans, but especially our seniors, can quickly and easily access the services provided at our DMVs and experience little to no wait times. We have much more planned for 2024."

Seniors utilizing this "Senior Only" walk-in center do not need appoint-

ments, and the facility provides standard Driver and Vehicle Services, such as driver's licenses, state identification cards, and REAL IDs. For additional information about the Bridgeview Community Center DMV, call (800) 252-8980 or visit www.ilsos.gov.



Alexi Giannoulias (left) and Park District Commissioner James Cecott (right) take a photo together within the new DMV.



The ribbon is cut! Front row left to right: Senator Mike Porfirio, Secretary of State Alexi Giannoulias, Representative Mary Flowers, Bridgeview Mayor Steven Landek, Representative Abdelnasser Rashid, and Lyons Mayor Christopher Getty.



Alexi Giannoulias announces full senior only DMV services at the Bridgeview Community Center.

BRIDGEVIEW ENDS 2023 BUDGET WITH A **\$URPLUS**

Mayor Steven Landek recently announced that Bridgeview ended the 2023 budget year with a surplus. "It is always great news to share with the residents and taxpayers that our expenses were less than revenues. 2023 marks the 6th year in a row that we have concluded our fiscal year with either a break-even balance or a having a cash surplus," said Mayor Landek.

Preliminary reports show that monthly bills, pension payments, and bond payments are all paid up-to-date and on time, with nothing late or due. All projects for municipal upgrades, from water line replacement, water tank upgrades, fencing, vehicle purchases, and our street program are bud-

getted for and can be paid for without borrowing any money.

The recession of 2008 was tough on our state and our community. We have made significant changes to prepare for the next economic downturn without having to do any borrowing. The most important feature has been to set a goal to create a "rainy day fund."

Over the past 7 years we have tightened expenses and made the hard choices to cut the budget. That means we live within our means and use cash to pay our bills.


This tough stance has produced great results, and the "rainy day fund" of several million dollars is now

generating investment income for our community.

Mayor Landek added that, "Bridgeview is on the path to maintaining a strong financial position in 2024. Looking forward to 2030, in the next 6 years a large portion of debt will be paid while holding the line on property taxes and delivering the great service Bridgeview is known for!"



Mayor Steven Landek

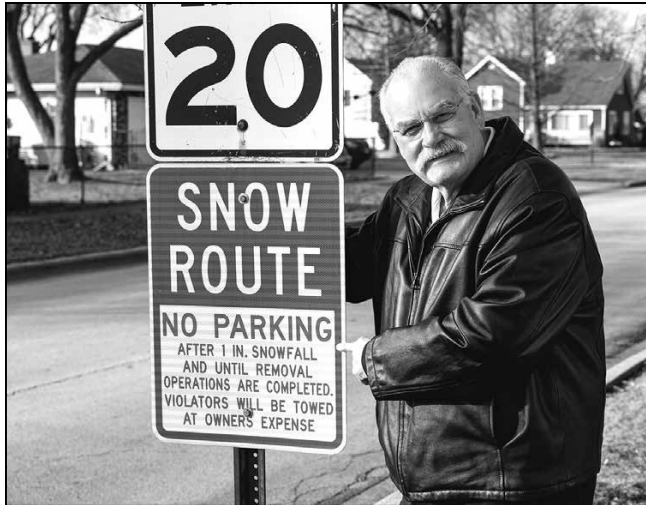


 Village of Bridgeview
 7500 South Oketo Avenue
 Bridgeview, IL 60455
 Email: info@villageofbridgeview.com
 Facebook.com/VillageofBridgeviewIL

Presort Std
 US Postage
 PAID
 Bridgeview IL
 Permit 318



 Village of BRIDGEVIEW
Sweetheart
 55+ Luncheon
 Free Fun February 21
 Entertainment by Charles & Company



Trustee Gary Lewis reminds you not to park on the streets after heavy snowfall.

FOLLOW THE SIGNS!

In order for the Village to efficiently clean the roads, please don't park on the village streets when the forecast for snow exceeds 1 inch of snow. That simple rule means NO Parking a car or truck on the street when snow is on the way. Don't fall asleep until you place all of your cars in your driveway. Cars on the street means the big plows can't plow snow and drop salt

as planned. There are many miles of streets to plow, and every delay means your neighbors on other streets have to wait a little longer.

Help Public Works keep our roads snow free and move your cars off the road for the big plows. A snow free road is a safer road for you and for our Village police, fire, and emergency crews.

Street Cleaning and Branch Chipping Services Continue

In many communities, street cleaning and branch chipping services stop in November. But NOT in Bridgeview. Because streets still get dirty in the Winter and because residents may always do yard work, the Village of Bridgeview Public Works Department continues to sweep our streets and pick up curbside branches throughout the year as



Street Sweeper rehydrates for a full day of service.

weather permits. Bridgeview recognizes the benefit of our wonderful community and maintains them for the need for these services.

Save the Date
 THE LIONS CLUBS OF BRIDGEVIEW, ARGO, SUMMIT & JUSTICE
 INVITE YOU TO JOIN & CELEBRATE
SUNDAY
 Teacher OF THE YEAR Business OF THE YEAR
 Veteran OF THE YEAR Peace Poster WINNER
 SUN | MARCH 10 | 12PM
 BRIDGEVIEW COMMUNITY CENTER
 7902 SOUTH OKETO AVENUE



Seniors enjoying great food and good company at the Holiday Brunch.



Trustee Gary Lewis (2nd from left) and Trustee Kalid Baste (2nd from right) serve delicious food and a smile at the Holiday Brunch.

Bridgeview Seniors Celebrate the Holiday Season!

Hundreds of Bridgeview residents 55+ attended the Holiday "Brunch or Lunch" hosted by the Village at the Bridgeview Community Center on December 14th. Attendees were in for toe-tapping tunes, flavorful foods, and holiday cheer whether they attended the breath-taking Brunch or the lovely Lunch.

Both seating times featured delicious spreads that came from Niko's in the morning and Mama Luigi's in the afternoon. There were scrambled eggs, bacon, sausages, hash browns, French toast, ham, bread rolls, and various miniature muffins for Brunch. Just as delicious was the stuffing, cranberry sauce, ham, barbecue ham, pasta, and bread

rolls for Lunch. Water, lemonade, and coffee were available at every table, and each attendee received a tasty cupcake for dessert.

Mayor Landek spoke to the crowd as they dug into their appetizing meals beneath thousands of holiday lights. "Thank you all for coming out to celebrate the holiday season with us. We expect to have served about 450 residents today and believe that every resident we can serve is a testament to the Village of Bridgeview's commitment to our wonderful community."

The renowned Rat Pack performers then came on stage and dazzled the crowd with their singing, dancing, and

joking. Dean Martin, Sammy Davis Jr., and Frank Sinatra's enthusiastic and comedic engagement with attendees filled the room with smiles and laughter.

After the entertainment, Village of Bridgeview elected officials randomly picked raffle tickets from a container to determine which lucky attendees would receive prizes! At each event seating, ten residents won holiday baskets filled with festive cookie cutters, baking mixes, and other treats and four won beautiful holiday wreaths.

Smiling faces, remarkable music, and delicious eats defined the Holiday Brunch or Lunch, and some attendees may have noticed Clerk John Altar, Trust-

ee Gary Lewis, and Trustee Kalid Baste serving food alongside Bridgeview Park District President Al Kruse! Also in attendance were Trustees Patt Higginson, Norma Pinion, and Claudette Struzik. We hope residents enjoyed the chance to share a meal with many of their elected officials.

The Village of Bridgeview appreciates those who attended, the incredible Rat Pack performers, and our hard-working employees who together made the Holiday Brunch or Lunch a smashing success! Happy Holidays from the Village of Bridgeview!

SEE MORE PHOTOS on page 8



Chamber of Commerce Vice President Vic Portillo takes donated items out of a moving van.



Chamber of Commerce Executive Director Sabrije Sabanowski (left) and a volunteer organize toys and foods.

Bridgeview Chamber of Commerce Distributes Food and Toys!

On Thursday, December 7th the Bridgeview Chamber of Commerce collected and distributed items donated for their Food and Toy Drive. Dozens of local businesses and organizations, in addition to Bridgeview's Village Hall, served as drop off locations for canned goods, dolls, toy cars, and more all to make life a little better for those in need in our area.

More than 30 volunteers from various

organizations worked out of the Bridgeview Community Center to organize donations, pack boxes, and transport the items to their destinations within Bridgeview and nearby communities. St. Fabian, Catholic Charities - St. Blase, Mosque Foundation, AAFS, Summit Senior Group, and School District 109 each received donations to be shared with community members. This

important work will provide meals and gifts to families who could benefit from our support this holiday season.

Bridgeview Chamber of Commerce Executive Director Sabrije Sabanowski offered this about the success of the event and its future potential, "I express my sincere appreciation to our esteemed membership for their unwavering support of the Chamber. With each pass-

ing year, this event continues to grow in magnitude, and I am truly thankful to have your backing, as it enables us to provide assistance to our community."

The Village of Bridgeview appreciates the efforts of the Bridgeview Chamber of Commerce and all who made the Food and Toy Drive possible, and the Village looks forward to supporting this event again in the future.



Volunteers pack nonperishable foods for distribution.



Tables of collected items fill the Bridgeview Community Center.

Snow-Shoveling Safety Tips for This Winter Season

With Winter weather in full effect, it's important to know how to stay safe when shoveling snow. Here are ten tips to remember this season.

- Bridgeview snowplows will clear the streets when it snows, so take your car off the street.
- Dress for the weather when you go out to shovel your driveway or sidewalk.
- Beware of ice that you may not notice, especially outside your front door.
- Stay hydrated when shoveling, as it is a physically intense exercise.
- Don't overwork your body. Take breaks and pay attention to how you feel.
- Bend at the knees, not your back, and lift with your legs bent. Stand with your feet hip-width apart for balance and keep the shovel close to your body.
- Don't pick up too much snow at once. Use a smaller shovel or fill a large shovel no more than halfway.
- Be safe when operating machinery such as snow blowers. Stay away from sharp edges and ensure the equipment is off before clearing snow jams.
- Have your phone with you in case you need to call 911 for medical assistance.
- Help out your neighbors as best you can. Bridgeview's community depends on residents helping residents in times of need.





A beautiful sunset view of the sprawling North Coast Music Festival from an upper level of the Stadium.

North Coast Music Festival Returning in 2024!

Chicagoland's biggest Labor Day Weekend music festival is returning to Bridgeview's SeatGeek Stadium for the 3rd year in a row on Friday August 30th, 2024. The anticipation for the North Coast Music Fest's next iteration is high as the festival recently enjoyed their fastest selling pre-sale to date. With North Coast regularly securing some of the biggest international names in EDM and house music genres, including Marshmello, Alesso, and Flume, as well as hosting over 100 talented musical artists, dozens of high-quality vendors, and captivating art installations, it's no wonder why the presale was so successful. If you missed North Coast 2023 don't worry—we've got you covered. Here's why North Coast Music Fest is such an incredible cultural phenomenon!

Spread throughout the festival grounds were six top-tier stages filled with dozens of musical artists that provided Coasties, the friendly festival goers, the chance to seek out the best vibes for themselves. Coasties that wanted to feed the flames of their excitement braved the Fire Pit, the fire-breathing dome that brought heat to the beat—literally. Flames flickered in front of the DJ table, glowed from the dome's ceiling, and exploded out of the dome's mounted flamethrowers.

When people needed to cool off, they entered The -196 Chill Dome—an expansive air-conditioned dome with a laser lightshow, sounds like lo-fi, and calming yoga. Whether you wanted to find your zen on one of the resting structures or have an interactive relaxation experi-

ence with fellow Coasties and the yoga instructor, the Chill Dome was the far-out space for those who needed space.

Coasties that weren't checking out the various stages were investigating the multiple stunning art installations spread across the festival grounds. A giant robot with spinning gears was a popular photo spot, a larger-than-life tree creature sat comfortably in the Silent Disco area, building-sized light-up tetriminoes dazzled passersby in the night, and a colorful North Coast Yacht powered by BeatBox provided the style of a fancy watercraft in front of the Shipyard stage.

Other North Coast attractions, along with activations put on by corporate sponsors, provided additional spaces with unique vibes to enjoy during breaks between sets. Coasties could be seen popping fog-bubbles spouting out of a machine along their path or lounging at a sponsored rest area. There was also a Ferris Wheel available for North Coast VIPs to ride for a full view of everything the fantastic and sprawling festival had to offer.

Speaking of exclusive areas, some festival goers learned of a secret phrase referenced on North Coast's tiktok allowing them to enter a hidden mini-club featuring its own DJ and an aerial view of the grand Stadium Stage where all Coasties flocked for the wildest performances filled with lasers, flames, and more. Little details like a secret club, amazing food vendors, and plenty of rest areas made the amazing festival experience all the more enjoyable.



Coasties vibe at the sponsored Jose Cuervo stage that lets them dance with the performing DJ.



The massive Vega stage electrifies the night with flames, fireworks, and lights in front of an equally massive crowd.

The beauty of the cultural phenomenon that is the North Coast Music Festival is the diversity of attendees and the freedom to make the festival experience your own while sharing it with other people there for a good time. Everyone and anyone, regardless of race, religion, sexual orientation, age, class, style, or musical choice, is welcome, and it's no wonder why Coasties come from all over

the country and even the world for the experience they can't get anywhere else. We hope you appreciated this brief rundown of the phenomenal North Coast Music Festival and join us in the summer of 2024 for another amazing time!

For the latest updates on the next North Coast Fest, follow @northcoastfest on TikTok, Instagram, Facebook, and YouTube.



The -196 Chill Dome's laser lightshow dazzles relaxing Coasties.



Flames shoot out the top of the blazing Fire Pit stage.



SeatGeek STADIUM

UPCOMING 2024 EVENTS



RUGBY RETURNS

MAR 24

SUN 1PM



CHICAGO RED STARS

2024 NWSL REGULAR SEASON BEGINS MARCH



CHICAGO FIRE

SCHEDULE TBA



INTERNATIONAL SOCCER

NOT YET ANNOUNCED




SUMMER SMASH

RETURNS TO SEATGEEK STADIUM 2024

FOR TICKETS VISIT SEATGEEK STADIUM.COM
 Follow us at facebook.com/seatgeekstadium



BRIDGEVIEW PUBLIC LIBRARY

ADDRESS: 7840 WEST 79TH STREET BRIDGEVIEW, IL 60455
 PHONE: (708) 458-2880
 WEBSITE: BRIDGEVIEWLIBRARY.ORG

LIBRARY BOARD OF TRUSTEES
 ALICE VILIMEK - BETTY MARTINEZ - MARWAN ALSAFADI
 NICK LAMNATOS - RANDY CARBEN - ALICE PORFIRIO
 ANNA ZIAJA-CASTILLO

LIBRARY HOURS: Mon. 10 a.m.—6 p.m. • Tues. 12 p.m.—8 p.m.
 Wed. 10 a.m.—6 p.m. • Thurs. 12 p.m.—8 p.m.
 Fri. 10 a.m.—6 p.m. • Sat. 10 a.m.—6 p.m. • Closed Sunday

Winter Bingo Reading Challenge

Winter is here and it's a perfect time to Read to Succeed with the Chicago Wolves! Our Winter Reading Bingo Challenge will run through January 1st to January 27th.

AGES Kindergarten to 8th grade only

- Everyone receives a free book for registering.
 - Each completed Genre badge earns 1 raffle ticket.
- Complete a row (up/down, diagonal, across) BINGO! and receive 4 Raffle tickets and a prize!
 - Complete the entire Bingo card and earn 8 Raffle tickets!



Chill out and **READ!**



Pre-Registration on BEANSTACK begins Tuesday, December 26th

Bridgeview Library's Beanstack website: www.bridgeviewlibrary.beanstack.org
 Or click on the link on our website home page



Beanstack

Winter Programs begin January 29, 2024
 Visit our website for program information www.bridgeviewlibrary.org


Seniors Ring in the Noon Year at the Park District!

Bridgeview seniors 55+ rung in the New Year with a Noon Year's Game Day Party in the Bridgeview Park District gym on Friday, December 29th. The celebration started with everyone receiving noisemakers and festive hats or tiaras to get into the New Year mood. With attendees dressed and ready for the occasion, they gathered in the center of the gym for the count-down and balloon drop. The announcer counted down from ten as excitement filled the room, and at 12 p.m. exactly Bridgeview Park District Vice President Pannaralla and Treasurer Ahmad pulled the string to release the gold and red balloons that cascaded down on the crowd. Cheers and the sounds of noisemakers created a small roar as everyone celebrated.

Residents were provided with New Year word searches to enjoy while they ate their meals and drank coffee, soda, water, or delicious punch. When attendees started to finish eating, the fun game of attention and chance—Bingo—began in full. Residents at the New Year's Game Day Party at Noon enjoyed a festive atmosphere filled with fun activities, great food, and good cheer to start the New Year off right.



Park District Commissioners Mariam Ahmad (center left) & Ken Pannaralla (center right) pull the rope to release the balloons from the ceiling at Noon Years Eve!



8100 S. Beloit Ave. Bridgeview, IL 60455 | 708-594-1818 | Bridgeviewparkdistrict.com

BRIDGEVIEW PARK DISTRICT BOARD OF COMMISSIONERS

Alan Kruse Ken Pannaralla Mariam Ahmad Justin Willis James Cecott
President *Vice-President* *Treasurer* *Secretary* *Commissioner*

Christmas Dinner, Holiday Fun with Park District!

The halls were decked and the gym was absolutely overflowing with holiday decorations for the Annual Bridgeview Park District's Annual Christmas Dinner, December 10th. Thousands of lights and hundreds of candy canes and gingerbread people covered the ceiling, and at the center was a pathway lined with giant candy leading to a gingerbread house.



Santa Claus listens to Christmas wishes.

The festivities kicked off with a delicious holiday dining experience featuring every Christmas staple you could hope for. There was salad, potato wedges, cranberry sauce, turkey, gravy, corn, bread rolls, and stuffing served by volunteers, Bridgeview Park District employees, and the Bridgeview Park District Board of Commissioners, Al Kruse, Ken Pannaralla, Mariam Ahmad, Justin Willis, and James Cecott.

Filled with energy from the hearty and joyous meal, children danced to their Christmas favorites played by DJ Mike and enjoyed live performances by James Libera throughout the night. When their signature holiday song started playing, gingerbread men suddenly burst into the room and began dancing and playing with the excited crowd.

With music playing in the background, 15 lucky attendees who found

tickets taped beneath their seats were invited to participate in a fun-filled game! Participants blindly used their hands to feel an unknown object that might be soft, furry, tough, or something in-between and were asked to guess what that object was! Whether people guessed correctly or not they received a small stuffed elf to take home for their efforts.

Soon after, Mrs. Claus made her appearance and caused a gleeful commotion that filled the room with sugar-sweet smiles as she began handing out gingerbread cookies along with the icing to decorate them.

With tasty treats in families' hands, the excitement continued with the an-



Bridgeview residents fill the Park District gym to enjoy their Christmas dinner and other activities.

nouncement of the Gingerbread Decorating Contest winners. Throughout the day guests were encouraged to view the collection of gingerbread houses and vote for their favorite. Confectionary creations ranged from simple and elegant to elaborate and chaotic with colorful candy galore. Park District Vice-President Ken Pannaralla announced the contest winners and handed out their gift card prizes amid

enthusiastic applause.

Just when families thought the night couldn't get any better, none other than jolly old Saint Nick himself emerged to spread holiday cheer! Santa Claus sauntered merrily around the room in his fluffy white beard and red suit to speak with the thrilled children and take pictures with them. This marked the end of a long and joyful night filled with smiles, surprises, and holiday spirit.

BRIDGEVIEW PARK DISTRICT 2024 WINTER YOUTH BASKETBALL LEAGUE

LEAGUE PLAY- OUR TEAMS WILL RETURN TO LEAGUE PLAY IN THE SOUTH SUBURBAN BASKETBALL LEAGUE. ALL TEAMS WILL PLAY A HOME GAME AND AN AWAY GAME SCHEDULED ON SATURDAY'S THROUGHOUT THE WINTER.

PLAYERS- ALL PLAYERS WILL BE PLACED ON THE APPROPRIATE BRIDGEVIEW PARK DISTRICT AGE GROUP TEAMS

PRACTICES- ALL TEAMS WILL PRACTICE A MINIMUM OF ONCE A WEEK STARTING THE WEEK OF JANUARY 8TH.

LEAGUE GAMES- THE SOUTH SUBURBAN BASKETBALL LEAGUE WILL BEGIN ON JANUARY 27TH AND RUN ALL THE WAY THROUGH MARCH 23RD

PLAYER FEE- EACH PLAYER COSTS A TOTAL OF \$125 PER PERSON. THIS FEE INCLUDES UNIFORMS AND POST SEASON PIZZA PARTY.

**\$125
PER
PLAYER**

DIVISIONS:

- 1ST & 2ND GRADE
- 3RD & 4TH GRADE
- 5TH & 6TH GRADE
- 7TH & 8TH GRADE

BOYS AND GIRLS

REGISTER IN PERSON OR ONLINE TODAY!

DEADLINE FRIDAY JANUARY 5TH

REGISTER NOW

VOLUNTEERS:

VOLUNTEER COACHES WILL BE NEEDED FOR EACH TEAM. ALL VOLUNTEERS WILL RECEIVE TRAINING AND GUIDANCE FROM THE BRIDGEVIEW PARK DISTRICT ATHLETIC STAFF. ALL HEAD COACHES WILL RECEIVE A DISCOUNTED PLAYER FEE AND A COACHING PACKAGE.

8100 S Beloit Ave Bridgeview, IL 60455 708-594-1818 www.bridgeviewparkdistrict.com

Bridgeview Park District TAEKWONDO CLASSES


WINTER SESSION: JANUARY 18TH-MARCH 7TH

AGES 5-12: THURSDAYS: 5:00PM-5:45PM

AGES 13 AND UP: THURSDAYS 6:00PM-7:00PM

\$80 BEFORE DECEMBER 22ND

\$90 AFTER DECEMBER 22ND



Class Description:

Martial arts develops many positive character traits in addition to physical fitness, coordination and self-discipline. Students learn how to use every part of their body more effectively, and to focus their mind efficiently. The class focuses on self-defense and skill and does not require competition for advancement.

Instructor Bio:

Grandmaster Cameron was inducted into the USA Martial Arts Hall of Fame in 2018 as Grandmaster of the Year and has 50 years experience. He is one of the highest ranked martial artists in the Western World with an 9th degree black belt.

8100 S. Beloit Ave. Bridgeview, IL 60455 708-594-1818 www.bridgeviewparkdistrict.com

IMPORTANT 2024 DATES

April 1st ————— Village Vehicle Stickers & Pet Tags go on Sale

April 1st ————— Yard Waste Collection Begins

May 11th ————— Spring Cleanup Day

Monday, May 27th ————— Memorial Day

Tuesday, May 28th ————— Garbage will be picked up

May 31st ————— Vehicle Sticker Deadline

September 28th ————— Fall Cleanup Day

..... **Treasure Day Dates**

September 7th & 8th — North of 87th Street / East of the Tracks

September 14th & 15th — North of 87th Street / West of the Tracks

September 21st & 22nd — South of 87th Street

----- ✂

Cut Here & Save these Dates!

Senior Christmas "Brunch or Lunch Fun"



A festive and memorable event for all who attended.

Village of BRIDGEVIEW
Sweetheart
 55+ Luncheon
 Entertainment by Charles & Company

Wednesday, February 21st
 Bridgeview Community Center
 7902 South Oketo Avenue
 Fun Begins 11:30am

ONLY 255 SEATS AVAILABLE! RSVP REQUIRED!
 To RSVP call: 708.594.2525 Ext. 3
 Email: info@villageofbridgeview.com
 or scan the QR Code to RSVP Online.



Park Commissioners Al Kruse (left) and Ken Pannaralla (right) present raffle prizes.



The Rat Pack sing their hearts out for the crowd!

BRIDGEVIEWS

Bridgeview-il.gov

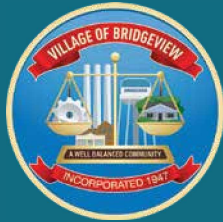


VillageofBridgeviewIL

Highlighting Community News & Events

January 2025 - Volume 34, No. 1

Bridgeview Seniors Enjoy Happy Holidays!



VILLAGE OF BRIDGEVIEW
MAYOR

Steven M. Landek

BOARD OF TRUSTEES

Patricia A. Higginson
Kalid Baste
Norma J. Pinion
Michael J. Pticeck
Claudette Struzik
Gary D. Lewis

VILLAGE CLERK

John Altar

VILLAGE CUSTOMER
SERVICE HOURS

Mon: 8 a.m. - 6 p.m.
Tue: 8 a.m. - 6 p.m.
Wed: 8 a.m. - 8 p.m.
Thu: 8 a.m. - 6 p.m.
Fri: 8 a.m. - 6 p.m.
Sat: 9 a.m. - 1 p.m.
Sun: CLOSED

Open 56 hours a week
to serve you better!

7500 South Oketo Ave.
Bridgeview, IL 60455
Village Services:
708-594-2525
Emergency: 911



Clerk John Altar delivers a gift basket to a winner!



Park District Treasurer Mariam Ahmad (right) serves chicken to a happy resident.



The Argo High School Choir sings Christmas classics!



Seniors filled the Community Center with holiday cheer!

With it being 'the most wonderful time of the year,' on December 11th the Bridgeview Community Center was home to the cozy and festive Happy Holidays Senior Luncheon hosted by the Village of Bridgeview. Residents 55+ were immediately greeted by hundreds of holiday balloons, beautifully wrapped presents, and Christmas-themed lights that set the tone for wonderful festivities.

The spirit of giving was in full force. Three rounds of random prize giveaways delighted everyone throughout the afternoon, with Trustee Gary Lewis and Clerk John Altar delivering the holiday gifts to the lucky winners. Unwrapping the presents revealed chocolates, mugs, baking mixes, cookie kits, and other holiday treats that lit up the room in joy. When they weren't enjoying the surprise giveaways, seniors

dined on delicious food from Nikos, including mashed potatoes, beef, chicken, green beans, and mostaccioli. The holiday haul was surely enough to leave even Santa's belly full! Water, lemonade, and coffee were served at every table along with delicious cupcakes for dessert.

With lunch served, the musical entertainment began! The Argo High School Choir performed lovely renditions of "Rudolph, the Red-Nosed Reindeer," "Frosty

the Snowman," and many more classic songs that blew the crowd away, and the pianist kept all entertained during breaks.

The luncheon's outstanding singing, delicious food, and wonderful prizes brought the spirit of the holidays to life. The Village of Bridgeview thanks those who attended, the Argo High School choir, and all who made the Happy Holidays Luncheon the memorable time it was. Happy Holidays from the Village of Bridgeview!

Presort Std
US Postage
PAID
Permit 318

Village of Bridgeview
7500 South Oketo Avenue
Bridgeview, IL 60455
Email: info@villageofbridgeview.com
Facebook.com/VillageofBridgeviewIL

FREE
55+ SENIOR

Lucky Luncheon

**MARCH 6TH
11:30AM**

BRIDGEVIEW COMMUNITY CENTER
7902 SOUTH OKETO AVE.
BRIDGEVIEW IL

LIMITED SEATING - 255 seats available! RESERVE YOUR SPACE NOW!

To RSVP • call: 708.594.2525 Ext 3 • Email: info@villageofbridgeview.com
• or scan the QR code to register online



IDFPR employees assist residents with their licensing issues.

Professional Licensing Assistance Comes to Bridgeview!

The Illinois Department of Financial and Professional Regulation (IDFPR), in partnership with State Senator Mike Porfirio, State Representative Angelica Guerrero-Cuellar, and State Representative Abdelnasser Rashid, brought the department's services to the Bridgeview Community Center on Tuesday, December 17th from 3-6pm to provide in-person professional licensing application support to local residents. The IDFPR "serves as the regulatory backbone in the Land of Lincoln, licensing and regulating more than 1.2 million professionals across more than 100 various professions," according to their website. Some of the many professionals required to register with the state include, architects, barbers, clinical and prescribing psychologists, marriage and family therapists, nail technicians, salon shop workers, pharmacists, physicians, social workers, registered nurses, and professional engineers.

Providing coffee and donuts, Sen.

Porfirio joined the IDFPR On The Road event to speak with residents and see the impact of the services firsthand. "It's a good crowd here tonight," said Senator Porfirio. "There are so many different people who need to get their professional licenses renewed, and this local event saves people the trouble of driving into Chicago or to Springfield to get in-person help. Online support is available, but the in-person support can really make things easier."

Our Lyons Township Assessor, Patrick Hynes, even came to the event for assistance with his real estate appraisal licensing application. "I'm glad to see so many people like me making use of this convenient opportunity for licensing assistance."

Whether people had questions about renewing their licenses or applying for the first time, the IDFPR assisted dozens of local professionals that run small businesses and provide services that make our everyday lives possible.



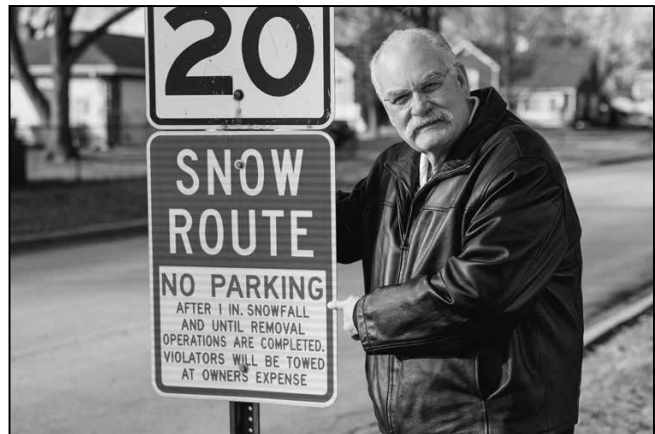
Sen. Mike Porfirio talks with residents about professional licensing.

Snow is Here, and So Are the Plows!

In order for the Village of Bridgeview to efficiently clean the roads, please don't park on the Village streets when the forecast for snow exceeds 1 inch. That simple rule means NO Parking any cars or trucks on the street when snow is on the way. Please don't fall asleep until you place all of your cars in your driveway. Cars on the street prevent the big plows from plowing snow and dropping salt as planned. Garbage/waste should also be kept out of the streets to

ensure that street sweepers and snowplows won't run into any objects as they do their vital work. There are many miles of streets to plow, and every delay means your neighbors on other streets are forced to wait a little longer.

Help Public Works keep our roads snow free and move your cars off the road for the big plows. A snow free road is a safer road for you and for our Village police, fire, and emergency crews.



Trustee Gary Lewis reminds you not to park on the streets when 1 or more inches of snowfall are expected.

Bridgeview Water Tower Gets New Trees

As part of the grant that paid for new trees around SeatGeek Stadium, 25 new trees have been planted by Openlands around the Bridgeview Water Department property bordering Thomas Avenue, 71st Street, and Beloit Avenue. Adding the greenery progresses the Village of Bridgeview's goals of beau-

tifying our community and supporting the environment. The new trees may not look like much in the winter, but along with the native pollinator gardens planted around Village Hall's sign and the entrance to SeatGeek Stadium, the spring will show just how green the Village of Bridgeview is.



Openlands plants a line of trees along 71st St.

Bridgeview Chamber of Commerce Delivers Holiday Donations!



Volunteers pack toys and nonperishable foods for distribution.

On Wednesday, December 5th the Bridgeview Chamber of Commerce collected and distributed items donated for their Food and Toy Drive. Along with Bridgeview's Village Hall, dozens of local businesses and organizations served as drop off locations for canned goods, dolls, toy cars, and more to make life a little better for those in need in our area.

More than 30 volunteers from various organizations worked out of the Bridgeview Community Center to organize donations, pack boxes, and transport the items to their destinations

within Bridgeview and nearby communities. St. Fabian, Catholic Charities - St. Blase, Mosque Foundation, AAFS, Summit Senior Group, and School District 109 each received donations to be shared with community members. This important work provided meals and gifts to families during the holiday season.

The Village of Bridgeview appreciates the efforts of the Bridgeview Chamber of Commerce and all who made the Food and Toy Drive possible, and the Village looks forward to supporting this event again in the future.

Heating Your Home Safely

Residents should keep the following tips in mind through the cold winter months:

- Never use your oven for heat.
- Never bring charcoal or gas grills indoors (they are a carbon monoxide hazard).
- Make sure all portable heaters are unplugged when not in use.
- Use electric space heaters with extreme caution – avoid placing them near curtains or other flammable materials and turn them off before going to bed.
- Keep heat at adequate levels or leave faucets open with a slight drip to prevent pipes from freezing.
- Keep moving. Your body generates its



Unplug space heaters when not in use and avoid plugging in multiple devices to one outlet to avoid electrical fires.

own heat when you engage in physical activities.

When temperatures in Cook County are expected to dip to unsafe levels, the County's Department of Emergency Management and Regional Security provides an updated list of warming centers for residents to protect themselves and their families. Residents who

need to seek shelter at a warming center should contact the center first to verify availability and hours of operation. The warming center nearest to Bridgeview is the Louis S. Viverito Senior Center located at 7745 Leamington Avenue, Burbank. Its phone number is (708) 636-8850.



Park District Commissioners Ken Pannaralla, Mariam Ahmad, and Justin Willis pull the string to drop the balloons with Village Clerk John Altar!



Residents celebrated the Noon Year in style!

Seniors Celebrate the Noon Year at the Park District!

One hundred Bridgeview seniors 55+ joyfully rung in the New Year at the Bridgeview Park District's annual Noon Year's Eve Party on Monday, December 30th. The celebration kicked off with free noisemakers, festive hats, and tiaras to help get everyone in a celebratory Noon Year's mood. With attendees dressed and ready for the occasion, they gathered in the center of the gym for the countdown and mini balloon drop. The announcer counted down from ten as excitement filled the room, and at 12 p.m. exactly, Bridgeview Park District Vice President Ken Pannaralla, Treasurer Mariam Ah-

mad, Secretary Justin Willis, and Village Clerk John Altar pulled the string to release the gold and red balloons that cascaded down on the crowd. Noisemakers and cheers echoed through the room as everyone celebrated the change of one year into another.

"It's great to foster a sense of community with an accessible New Year's party," explained Vice President Pannaralla. "The seniors in the area really look forward to the programming the Bridgeview Park District provides," added Treasurer Ahmad.

After the balloon drop, the fun game

of attention and chance—Bingo—began in full. Attendees stamped their bingo cards as numbers were read aloud, with everyone hoping to be the first prize winner. It wasn't long before a shout of "Bingo!" echoed through the gym, and a woman happily picked out her prize cup with a gift card inside.

Delicious food from the Bridgeview Culver's arrived, and residents cheerfully dined on chicken tenders, broccoli, mashed potatoes, and chocolate or vanilla custard. After a tasty lunch, a representative from Oak St. Health gave out a foot massager as a raffle prize to a

lucky resident to kick off the new year. The "left/right game" then captured everyone's attention as residents listened closely to the story and passed gift bags to the person sitting to their left or right. When the game finished, residents opened their bags to reveal 2025 calendars, planners, mugs, calendars, or puzzles!

Residents at the Noon Year's Eve Party celebrated another rotation around the earth and the potential of 2025 in a festive atmosphere filled with fun activities, great food, and good cheer to start the new year off right.

Families Flock to Winter Rugby Fest!

The epic game of rugby has new followers after the Chicago Hounds' Family Winter Rugby Fest. Over 130 people came out to experience rugby firsthand in a safe, friendly environment at Seat-Geek Stadium on Sunday, December 15th. The heated Bridgeview Sports Dome and its turf field provided all the comfort and space new rugby players of all ages could ask for as they learned the rules of the growing sport from Chicago Hounds players and coaches and played a beginner-friendly no-tackle version. Men, women, and children all got the chance to throw the rugby ball, play defense, and score in the dome like professional athletes.

"At its core, the Winter Rugby Fest is about strengthening our connection to the local community and introducing more people to rugby in a fun and festive way," explained Chicago Hounds Community Outreach Coordinator Ron

Estrada. "We are thrilled to see so many families and players of all ages and experience levels join us for a day of fun and community. Rugby is for everybody."

Those who weren't trying out the game enjoyed crafting Christmas tree ornaments, having their faces painted, requesting unique creations from the balloon artist, tossing bean bags, and spending time at the holiday photo area with Rugby Claus and Houndy, the team's lovable mascot. After a full afternoon of activity, everyone chowed down on carb-filled pizza and treats while listening to the DJ's holiday tracks. The engaging rugby fest provided fun for the whole family and showcased the exciting game played by our very own Chicago Hounds who are planning youth clinics, school partnerships, and more community gatherings in the future to make rugby accessible and inviting to everyone!



Children learn the game of rugby!



Fans take a photo with Holiday Houndy!



A new rugby fan gets a gingerbread face-painting.



Adults play a safe walking rugby match.

 A promotional poster for single game tickets. The text "SINGLE GAME TICKETS" is written in large, bold, green letters, with "on sale now" in smaller green text below it. The background features a collage of rugby players in action, including the mascot Houndy. At the bottom, there is a schedule of games with logos for each date:

FEBRUARY 23	MARCH 2	MARCH 15	APRIL 13	MAY 4	MAY 19	MAY 31	JUNE 4
-------------	---------	----------	----------	-------	--------	--------	--------

 Below the schedule, it says "buy your tickets today chicagohounds.com/tickets".



SeatGeek STADIUM

UPCOMING 2025 EVENTS



RUGBY RETURNS

SUN | FEB 23 | 2PM



CHICAGO STARS

2025 NWSL REGULAR SEASON BEGINS MARCH



SUMMER SMASH

COMING SUMMER 2025

NORTH COAST MUSIC FESTIVAL

AUGUST 29-31
15 YEAR ANNIVERSARY



2025

New and Returning Events

FOR TICKETS VISIT [SEATGEEK STADIUM.COM](https://seatgeekstadium.com)
Follow us at facebook.com/seatgeekstadium





BRIDGEVIEW PUBLIC LIBRARY

ADDRESS: 7840 WEST 79TH STREET BRIDGEVIEW, IL 60455
 PHONE: (708) 458-2880
 WEBSITE: BRIDGEVIEWLIBRARY.ORG

LIBRARY BOARD OF TRUSTEES
 ALICE VILIMEK - BETTY MARTINEZ - MARWAN ALSAFADI
 NICK LAMNATOS - RANDY CARBEN - ALICE PORFIRIO
 ANNA ZIAJA-CASTILLO

In-House Programs

Registration at the Youth Services desk begins 30 minutes before each program.

Monday, January 27th at 4pm—Snow Paint: Join us as we create our own snow to paint a textured winter themed picture. Grades 3rd to 6th MAX 15

Wednesday, January 29th at 4pm—Arctic Animals Storytime: Bundle up for this chilly storytime! We will learn about animals who live in the cold, do a craft and have a cold treat. AGES 4 to 7 years MAX 15

Fridays Beginning January 31st at 11am—Book, Boogie & Play!: The best of both worlds for our toddlers! We will read a story, boogie to music with instruments, and finish the remaining time playing together. AGES 18 months to 3 years MAX 20

Wednesday, Feb. 5th, 19th & March 5th at 4pm—Choose Your Own Book Club: This book club will allow kids to choose their own book, after discussing with their peers about what the genre or theme will be. Come back for the next club date to discuss your book with the group. Each week will have a new mystery activity that will tie into the chosen genre. February 5th club will be discussing books chosen from the Historical Fiction genre. Choose your own book and join us! Grades 3rd—6th MAX 15

Thursday, February 6th at 4pm—Bubble Art: We'll begin our time with the story of two friends, Rueben and Felix, and their bubble challenge. Then we will be creative with bubble painting! Grades K-2nd MAX 15

Tuesday, February 11th at 6:30pm—Valentine's Day Craft : Create a Valentine's Day craft to give to someone special. Grades K to 6th MAX 20



Get YETI to read!

2025 Winter Program Session

January 27th to March 8th.
 Please visit our website www.bridgeviewlibrary.org for more upcoming program information.

LITTLE LUNAS



Saturday, February 1st at 2pm—Little Lunas Interactive Bilingual Concert:
 As educators and teaching artists of over 20 years, the Cervantes sisters merge their love of music and education to bring you LITTLE LUNAS, an interactive and bilingual concert for young audiences. Best for ages 3 to 6 years. Lower Level—No registration required



Calling all Parents, Grandparents and anyone that interacts with youth

YOUTH MENTAL HEALTH FIRST AID TRAINING

YOUTH MENTAL HEALTH FIRST AID TEACHES ADULTS HOW TO IDENTIFY, UNDERSTAND AND RESPOND TO SIGNS OF MENTAL HEALTH AND SUBSTANCE USE CHALLENGES AMONG CHILDREN AND ADOLESCENTS AGES 12-18.

JOIN US FOR THIS FREE BLENDED CLASS THAT REQUIRES 2 HOURS OF ONLINE PREWORK
JAN 31 | 11:00AM - 4:00PM

BRIDGEVIEW LIBRARY
 7840 W. 79TH STREET, BRIDGEVIEW, IL
 LUNCH WILL BE SERVED



REGISTER TODAY



FREE

*CEUs and CPDUs for professional development available

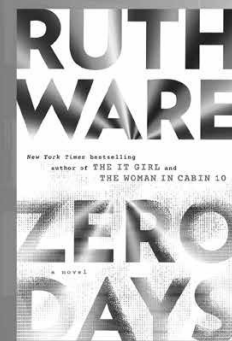
Brought to you by:



Welcome back book club goes!

January 2025's book is.....

Zero Days by Ruth Ware



Books can be picked up on/after January 1, 2025

Meeting is on Thursday January 30th, 2025 6pm



8100 S. Beloit Ave. Bridgeview, IL 60455 | 708-594-1818 | Bridgeviewparkdistrict.com

BRIDGEVIEW PARK DISTRICT BOARD OF COMMISSIONERS

Alan Kruse
President

Ken Pannaralla
Vice-President

Mariam Ahmad
Treasurer

Justin Willis
Secretary

James Cecott
Commissioner



BRIDGEVIEW PARK DISTRICT PRESENTS:

CUPIDS CUPCAKES VALENTINE'S PARTY



**WEDNESDAY FEBRUARY 12TH
6:00-8:00P.M.**

JOIN US FOR A SWEET NIGHT OF FUN!
COME AND PARTAKE IN NUMEROUS VALENTINES CRAFTS AND GAMES!
CUPCAKE DECORATING, MUSIC, DANCING AND EVEN A VISIT FROM CUPID'S FRIEND HARRIET THE HEART!

REGISTER NOW ONLINE OR IN PERSON
\$12 PER CHILD
\$5 PER ADULT LIMITED SPACES AVAILABLE!
CHILD MUST BE ACCOMPANIED BY AN ADULT
AGES: 3-13

SCAN FOR TICKETS
PRE-REGISTRATION REQUIRED




WWW.BRIDGEVIEWPARKDISTRICT.COM 8100 S. BELOIT AVE 708-594-1818



BRIDGEVIEW PARK DISTRICT PRESENTS:

LEPRECHAUN HUNT

THE SEARCH IS ON!



Join us on the Luckiest day of the year and try your luck on our Leprechaun Treasure Hunt!
Find as many leprechauns as you can to win the Pot of gold! 1ST, 2ND and 3RD place to be awarded

RAIN OR SHINE EVENT
BRING YOUR OWN FLASH LIGHT
\$5 PER PERSON
REGISTER ONLINE OR IN PERSON

**MONDAY MARCH 17TH
7:00-8:00P.M.
COMMISSIONERS PARK
BRIDGEVIEW IL**

Come dressed in your best leprechaun attire to participate in our Leprechaun look alike contest! Prizes to be awarded!

SCAN ME



www.bridgeviewparkdistrict.com
708-594-1818



TREASURE MAP




2025 IMPORTANT DATES

- January 20th** ————— Martin Luther King Jr. Day
(Normal Garbage Pickup)
- March 6th** ————— Senior Lucky Luncheon
- March 9th** ————— Lions Club Super Sunday
- March 15** ————— Repair Cafe
- March 20** ————— Veteran's Fair
- April 7th** ————— Yard Waste Collection Starts
- Saturday, April 26th** ————— Spring Cleanup Day
- Monday, May 26th** ————— Memorial Day
(Garbage Pickup on Tuesday)
- Thursday, July 3rd** ————— Bridgeview Park District
Fireworks
- Friday, July 4th** ————— Independence Day
- Tuesday, August 5th** ————— National Night Out
/Community Day
- Monday, September 1st** ————— Labor Day
(Garbage Pickup on Tuesday)
- Saturday, October 4th** ————— Fall Cleanup Day
- Friday, October 31st** ————— Halloween
- Thursday, November 27th** ——— Thanksgiving Holiday
(Village Hall Closed)
- Wednesday, December 24th** ——— Christmas Eve
- Thursday, December 25th** ——— Christmas Holiday
(Village Hall Closed)

2025 Treasure Days

- Sept. 6th and 7th** ————— homes south of 87th street
- Sept. 13th and 14th** ————— homes north of
87th street and west of tracks
- Sept. 20th and 21st** ————— homes north of
87th street and east of tracks

DRY WEATHER VISUAL INSPECTION FORM

✓ Dry Weather Inspections are to be performed at least 72 hours after any rainfall has occurred

Section 1: Background Data

Pond / Watercourse Name: <u>71st Street Ditch</u>		Structure / ID:	
Today's date: <u>12-23-2024</u>		Time (Military):	
Investigators: <u>Danny Green</u>		Form completed by: <u>Danny Green</u>	
Temperature (°F): <u>36°</u>	Rainfall (in.): 0.00	Last 72 hours: 0.00	Last 96 hours:
Latitude:	Longitude:	GPS Unit:	GPS LMK #:
Camera: <u>See attached</u>		Photo #s:	
Land Use in Drainage Area (Check all that apply):			
<input type="checkbox"/> Commercial		<input type="checkbox"/> Residential	
<input checked="" type="checkbox"/> Open Space		<input type="checkbox"/> Industrial	
<input type="checkbox"/> Other: _____		Known Industries: <u>PepsiCo / Signode / Seatgeek Stadium</u>	
Notes (eg., origin of outfall, if known):			

Section 2: Outfall / Location Description

TYPE	MATERIAL	SHAPE	DIMENSIONS (IN.)	SUBMERGED
<input checked="" type="checkbox"/> Pipe	<input checked="" type="checkbox"/> RCP <input type="checkbox"/> CMP <input type="checkbox"/> PVC <input type="checkbox"/> HDPE <input type="checkbox"/> Steel <input type="checkbox"/> Other: _____	<input checked="" type="checkbox"/> Circular <input type="checkbox"/> Elliptical <input type="checkbox"/> Box <input type="checkbox"/> Other: _____	<input type="checkbox"/> Flared End <input type="checkbox"/> Concrete Headwall <input type="checkbox"/> Pipe <input type="checkbox"/> Concrete Slope Wall <input type="checkbox"/> Other: _____	Diameter / Dimensions: <u>87" #1</u> In Water: <input type="checkbox"/> No <input checked="" type="checkbox"/> Partially <input type="checkbox"/> Fully With Sediment: <input checked="" type="checkbox"/> No <input type="checkbox"/> Partially <input type="checkbox"/> Fully
<input type="checkbox"/> Manhole / Catch Basin / Inlet	<input type="checkbox"/> Steel	<input type="checkbox"/> Box		
<input checked="" type="checkbox"/> Open Drainage	<input type="checkbox"/> Concrete channel <input type="checkbox"/> Earthen <input type="checkbox"/> Rip-rap <input type="checkbox"/> Other: _____	<input type="checkbox"/> Trapezoid <input type="checkbox"/> Parabolic <input type="checkbox"/> Other: _____	Depth: _____ Top Width: _____ Bottom Width: _____	
<input type="checkbox"/> In-Stream	(applicable when collecting samples)			
Flow Present?	<input checked="" type="checkbox"/> Yes <input type="checkbox"/> No	If No, skip to Section 4		
Flow Description	<input checked="" type="checkbox"/> Trickle	Depth of Flow: _____ (in.)		

Section 3: Physical Indicators for Flowing Outfalls Only

Are Any Physical Indicators Present in the Flow? Yes No

INDICATOR	CHECK IF PRESENT	DESCRIPTION	RELATIVE SEVERITY INDEX (1-3)		
Odor	<input type="checkbox"/>	<input type="checkbox"/> Sewage <input type="checkbox"/> Rancid/sour <input type="checkbox"/> Sulfide <input type="checkbox"/> Other <input type="checkbox"/> Petroleum/gas	<input type="checkbox"/> 1-Faint	<input type="checkbox"/> 2-Easily Detected	<input type="checkbox"/> 3-Noticeable from a distance
Color	<input type="checkbox"/>	<input type="checkbox"/> Clear <input type="checkbox"/> Brown <input type="checkbox"/> Gray <input type="checkbox"/> Yellow <input type="checkbox"/> Green <input type="checkbox"/> Orange <input type="checkbox"/> Red <input type="checkbox"/> Other	<input type="checkbox"/> 1-Faint	<input type="checkbox"/> 2-Clearly Visible in Sample Bottle	<input type="checkbox"/> 3-Clearly Visible in Outfall Flow
Turbidity	<input type="checkbox"/>	See Severity	<input type="checkbox"/> 1-Slight Cloudy	<input type="checkbox"/> 2-Cloudy	<input type="checkbox"/> 3-Opaque
Floatables	<input type="checkbox"/>	<input type="checkbox"/> Sewage (Toilet Paper, etc.) <input type="checkbox"/> Suds <input type="checkbox"/> Petroleum (oil sheen) <input type="checkbox"/> Other:	<input type="checkbox"/> 1-Few /Slight; Origin not Obvious	<input type="checkbox"/> 2-Some; Indication of Origin (e.g. possible suds or oil sheen)	<input type="checkbox"/> 3-Some; Origin Clear (e.g. obvious oil sheen, suds or floating sanitary)

Section 4: Physical Indicators for Both Flowing and Non-Flowing Outfalls

Are Any Physical Indicators Present in the Flow? Yes No

INDICATOR	CHECK IF PRESENT	DESCRIPTION	COMMENTS
Outfall Damage	<input type="checkbox"/>	<input type="checkbox"/> Spalling, Cracking or Chipping <input type="checkbox"/> Peeling Paint <input type="checkbox"/> Corrosion	
Deposits/Stains	<input type="checkbox"/>	<input type="checkbox"/> Oily <input type="checkbox"/> Flow Line <input type="checkbox"/> Paint <input type="checkbox"/> Other:	
Abnormal Vegetation	<input type="checkbox"/>	<input type="checkbox"/> Excessive <input type="checkbox"/> Inhibited	
Poor Pool Quality	<input type="checkbox"/>	<input type="checkbox"/> Odors <input type="checkbox"/> Colors <input type="checkbox"/> Floatables <input type="checkbox"/> Oil Sheen <input type="checkbox"/> Suds <input type="checkbox"/> Excessive Algae <input type="checkbox"/> Other:	
Algae	<input type="checkbox"/>	<input type="checkbox"/> Brown <input type="checkbox"/> Orange <input type="checkbox"/> Green <input type="checkbox"/> Other:	









DRY WEATHER VISUAL INSPECTION FORM

Section 1: Background Data



Dry Weather Inspections are to be performed at least 72 hours after any rainfall has occurred

Pond / Watercourse Name: <u>Lucas Ditch</u>		Structure / ID: <u>103rd St</u>	
Today's date: <u>12-23-2024</u>		Time (Military):	
Investigators: <u>Danny Green</u>		Form completed by: <u>Danny Green</u>	
Temperature (°F): <u>36°</u>	Rainfall (in.): 0.00	Last 72 hours: 0.00	Last 96 hours:
Latitude:	Longitude:	GPS Unit:	GPS LMK #:
Camera: <u>see attached</u>		Photo #s:	
Land Use in Drainage Area (Check all that apply):			
<input type="checkbox"/> Commercial		<input type="checkbox"/> Residential	
<input checked="" type="checkbox"/> Open Space		<input type="checkbox"/> Industrial	
<input type="checkbox"/> Other: _____		Known Industries: _____	
Notes (eg., origin of outfall, if known):			

Section 2: Outfall / Location Description

TYPE	MATERIAL	SHAPE	DIMENSIONS (IN.)	SUBMERGED
<input checked="" type="checkbox"/> Pipe	<input checked="" type="checkbox"/> RCP <input type="checkbox"/> CMP <input type="checkbox"/> PVC <input type="checkbox"/> HDPE <input type="checkbox"/> Steel <input type="checkbox"/> Other: _____	<input type="checkbox"/> Circular <input checked="" type="checkbox"/> Elliptical <input type="checkbox"/> Box <input type="checkbox"/> Other: _____	<input type="checkbox"/> Flared End <input type="checkbox"/> Concrete Headwall <input type="checkbox"/> Pipe <input type="checkbox"/> Concrete Slope Wall <input type="checkbox"/> Other: _____	Diameter / Dimensions: In Water: <input type="checkbox"/> No <input checked="" type="checkbox"/> Partially <input type="checkbox"/> Fully With Sediment: <input type="checkbox"/> No <input checked="" type="checkbox"/> Partially <input type="checkbox"/> Fully
<input type="checkbox"/> Manhole / Catch Basin / Inlet	<input type="checkbox"/> Concrete channel <input type="checkbox"/> Earthen <input type="checkbox"/> Rip-rap <input type="checkbox"/> Other: _____	<input type="checkbox"/> Trapezoid <input type="checkbox"/> Parabolic <input type="checkbox"/> Other: _____	Depth: _____ Top Width: _____ Bottom Width: _____	
<input checked="" type="checkbox"/> Open Drainage	(applicable when collecting samples)			
<input type="checkbox"/> In-Stream				
Flow Present?	<input type="checkbox"/> Yes <input checked="" type="checkbox"/> No		<i>If No, skip to Section 4</i>	
Flow Description	<input type="checkbox"/> Trickle		Depth of Flow: _____ (in.)	

Section 3: Physical Indicators for Flowing Outfalls Only

Are Any Physical Indicators Present in the Flow? Yes No

INDICATOR	CHECK IF PRESENT	DESCRIPTION	RELATIVE SEVERITY INDEX (1-3)		
Odor	<input type="checkbox"/>	<input type="checkbox"/> Sewage <input type="checkbox"/> Rancid/sour <input type="checkbox"/> Sulfide <input type="checkbox"/> Other <input type="checkbox"/> Petroleum/gas	<input type="checkbox"/> 1-Faint	<input type="checkbox"/> 2-Easily Detected	<input type="checkbox"/> 3-Noticeable from a distance
Color	<input checked="" type="checkbox"/>	<input type="checkbox"/> Clear <input type="checkbox"/> Brown <input type="checkbox"/> Gray <input type="checkbox"/> Yellow <input checked="" type="checkbox"/> Green <input type="checkbox"/> Orange <input type="checkbox"/> Red <input type="checkbox"/> Other	<input checked="" type="checkbox"/> 1-Faint	<input type="checkbox"/> 2-Clearly Visible in Sample Bottle	<input type="checkbox"/> 3-Clearly Visible in Outfall Flow
Turbidity	<input type="checkbox"/>	See Severity	<input type="checkbox"/> 1-Slight Cloudy	<input type="checkbox"/> 2-Cloudy	<input type="checkbox"/> 3-Opaque
Floatables	<input type="checkbox"/>	<input type="checkbox"/> Sewage (Toilet Paper, etc.) <input type="checkbox"/> Suds <input type="checkbox"/> Petroleum (oil sheen) <input type="checkbox"/> Other:	<input type="checkbox"/> 1-Few /Slight; Origin not Obvious	<input type="checkbox"/> 2-Some; Indication of Origin (e.g. possible suds or oil sheen)	<input type="checkbox"/> 3-Some; Origin Clear (e.g. obvious oil sheen, suds or floating sanitary)

Section 4: Physical Indicators for Both Flowing and Non-Flowing Outfalls

Are Any Physical Indicators Present in the Flow? Yes No

INDICATOR	CHECK IF PRESENT	DESCRIPTION	COMMENTS
Outfall Damage	<input type="checkbox"/>	<input type="checkbox"/> Spalling, Cracking or Chipping <input type="checkbox"/> Peeling Paint <input type="checkbox"/> Corrosion	
Deposits/Stains	<input type="checkbox"/>	<input type="checkbox"/> Oily <input type="checkbox"/> Flow Line <input type="checkbox"/> Paint <input type="checkbox"/> Other:	
Abnormal Vegetation	<input type="checkbox"/>	<input checked="" type="checkbox"/> Excessive <input type="checkbox"/> Inhibited	<u>Bushes and trees in area</u>
Poor Pool Quality	<input type="checkbox"/>	<input type="checkbox"/> Odors <input type="checkbox"/> Colors <input type="checkbox"/> Floatables <input type="checkbox"/> Oil Sheen <input type="checkbox"/> Suds <input type="checkbox"/> Excessive Algae <input type="checkbox"/> Other:	
Algae	<input type="checkbox"/>	<input type="checkbox"/> Brown <input type="checkbox"/> Orange <input type="checkbox"/> Green <input type="checkbox"/> Other:	













DRY WEATHER VISUAL INSPECTION FORM

Section 1: Background Data

✓ Dry Weather Inspections are to be performed at least 72 hours after any rainfall has occurred

Pond / Watercourse Name: <u>Lucas Ditch Tributary</u>		Structure / ID: <u>Courthouse</u>	
Today's date: <u>12-23-2024</u>		Time (Military):	
Investigators: <u>Danny Green</u>		Form completed by:	
Temperature (°F): <u>36</u>	Rainfall (in.): <u>0.00</u>	Last 72 hours: <u>0.00</u>	Last 96 hours:
Latitude:	Longitude:	GPS Unit:	GPS LMK #:
Camera: <u>See attached</u>		Photo #s:	
Land Use in Drainage Area (Check all that apply):			
<input type="checkbox"/> Commercial		<input type="checkbox"/> Residential	
<input checked="" type="checkbox"/> Open Space		<input type="checkbox"/> Industrial	
<input type="checkbox"/> Other: _____		Known Industries: _____	
Notes (eg., origin of outfall, if known):			

Section 2: Outfall / Location Description

TYPE	MATERIAL	SHAPE	DIMENSIONS (IN.)	SUBMERGED	
<input checked="" type="checkbox"/> Pipe	<input checked="" type="checkbox"/> RCP <input type="checkbox"/> CMP <input type="checkbox"/> PVC <input type="checkbox"/> HDPE <input type="checkbox"/> Steel <input type="checkbox"/> Other: _____	<input type="checkbox"/> Circular <input type="checkbox"/> Elliptical <input type="checkbox"/> Box <input type="checkbox"/> Other: _____	<input type="checkbox"/> Flared End <input type="checkbox"/> Concrete Headwall <input type="checkbox"/> Pipe <input type="checkbox"/> Concrete Slope Wall <input type="checkbox"/> Other: _____	Diameter / Dimensions: Depth: _____ Top Width: _____ Bottom Width: _____	In Water: <input type="checkbox"/> No <input type="checkbox"/> Partially <input type="checkbox"/> Fully With Sediment: <input type="checkbox"/> No <input type="checkbox"/> Partially <input type="checkbox"/> Fully
<input checked="" type="checkbox"/> Open Drainage	<input type="checkbox"/> Concrete channel <input type="checkbox"/> Earthen <input type="checkbox"/> Rip-rap <input type="checkbox"/> Other: _____	<input type="checkbox"/> Trapezoid <input type="checkbox"/> Parabolic <input type="checkbox"/> Other: _____			
<input type="checkbox"/> In-Stream	(applicable when collecting samples)				
Flow Present?	<input type="checkbox"/> Yes <input checked="" type="checkbox"/> No		<i>If No, skip to Section 4</i>		
Flow Description	<input type="checkbox"/> Trickle		Depth of Flow: _____ (in.)		

Section 3: Physical Indicators for Flowing Outfalls Only

Are Any Physical Indicators Present in the Flow? Yes No

INDICATOR	CHECK IF PRESENT	DESCRIPTION	RELATIVE SEVERITY INDEX (1-3)		
Odor	<input type="checkbox"/>	<input type="checkbox"/> Sewage <input type="checkbox"/> Rancid/sour <input type="checkbox"/> Sulfide <input type="checkbox"/> Other <input type="checkbox"/> Petroleum/gas	<input type="checkbox"/> 1-Faint	<input type="checkbox"/> 2-Easily Detected	<input type="checkbox"/> 3-Noticeable from a distance
Color	<input checked="" type="checkbox"/>	<input type="checkbox"/> Clear <input type="checkbox"/> Brown <input type="checkbox"/> Gray <input type="checkbox"/> Yellow <input checked="" type="checkbox"/> Green <input type="checkbox"/> Orange <input type="checkbox"/> Red <input type="checkbox"/> Other	<input checked="" type="checkbox"/> 1-Faint	<input type="checkbox"/> 2-Clearly Visible in Sample Bottle	<input type="checkbox"/> 3-Clearly Visible in Outfall Flow
Turbidity	<input type="checkbox"/>	See Severity	<input type="checkbox"/> 1-Slight Cloudy	<input type="checkbox"/> 2-Cloudy	<input type="checkbox"/> 3-Opaque
Floatables	<input type="checkbox"/>	<input type="checkbox"/> Sewage (Toilet Paper, etc.) <input type="checkbox"/> Suds <input type="checkbox"/> Petroleum (oil sheen) <input type="checkbox"/> Other:	<input type="checkbox"/> 1-Few /Slight; Origin not Obvious	<input type="checkbox"/> 2-Some; Indication of Origin (e.g. possible suds or oil sheen)	<input type="checkbox"/> 3-Some; Origin Clear (e.g. obvious oil sheen, suds or floating sanitary)

Section 4: Physical Indicators for Both Flowing and Non-Flowing Outfalls

Are Any Physical Indicators Present in the Flow? Yes No

INDICATOR	CHECK IF PRESENT	DESCRIPTION	COMMENTS
Outfall Damage	<input type="checkbox"/>	<input type="checkbox"/> Spalling, Cracking or Chipping <input type="checkbox"/> Peeling Paint <input type="checkbox"/> Corrosion	
Deposits/Stains	<input type="checkbox"/>	<input type="checkbox"/> Oily <input type="checkbox"/> Flow Line <input type="checkbox"/> Paint <input type="checkbox"/> Other:	
Abnormal Vegetation	<input checked="" type="checkbox"/>	<input checked="" type="checkbox"/> Excessive <input type="checkbox"/> Inhibited	<u>Bushes and trees in area tall grass</u>
Poor Pool Quality	<input type="checkbox"/>	<input type="checkbox"/> Odors <input type="checkbox"/> Colors <input type="checkbox"/> Floatables <input type="checkbox"/> Oil Sheen <input type="checkbox"/> Suds <input type="checkbox"/> Excessive Algae <input type="checkbox"/> Other:	
Algae	<input type="checkbox"/>	<input type="checkbox"/> Brown <input type="checkbox"/> Orange <input type="checkbox"/> Green <input type="checkbox"/> Other:	











DRY WEATHER VISUAL INSPECTION FORM

Section 1: Background Data

✓ Dry Weather Inspections are to be performed at least 72 hours after any rainfall has occurred

Pond / Watercourse Name: <u>Lucas Ditch Tributary</u>		Structure / ID: <u>Hickory Hills Field</u>	
Today's date: <u>12-23-2024</u>		Time (Military):	
Investigators: <u>Danny Green</u>		Form completed by:	
Temperature (°F): <u>36°</u>	Rainfall (in.): <u>0.00</u>	Last 72 hours: <u>0.00</u>	Last 96 hours:
Latitude:	Longitude:	GPS Unit:	GPS LMK #:
Camera: <u>see attached</u>		Photo #s:	
Land Use in Drainage Area (Check all that apply):			
<input type="checkbox"/> Commercial		<input type="checkbox"/> Residential	
<input checked="" type="checkbox"/> Open Space		<input type="checkbox"/> Industrial	
<input type="checkbox"/> Other:		Known Industries: <u>VOB Industrial Area</u>	
Notes (eg., origin of outfall, if known):			

Section 2: Outfall / Location Description

TYPE	MATERIAL	SHAPE	DIMENSIONS (IN.)	SUBMERGED
<input checked="" type="checkbox"/> Pipe	<input checked="" type="checkbox"/> RCP <input type="checkbox"/> CMP <input type="checkbox"/> PVC <input type="checkbox"/> HDPE <input type="checkbox"/> Steel <input type="checkbox"/> Other: _____	<input checked="" type="checkbox"/> Circular <input type="checkbox"/> Elliptical <input type="checkbox"/> Box <input type="checkbox"/> Other: _____	<input type="checkbox"/> Flared End <input type="checkbox"/> Concrete Headwall <input type="checkbox"/> Pipe <input type="checkbox"/> Concrete Slope Wall <input type="checkbox"/> Other: _____	Diameter / Dimensions: In Water: <input type="checkbox"/> No <input checked="" type="checkbox"/> Partially <input type="checkbox"/> Fully With Sediment: <input type="checkbox"/> No <input checked="" type="checkbox"/> Partially <input type="checkbox"/> Fully
<input type="checkbox"/> Manhole / Catch Basin / Inlet	<input type="checkbox"/> Concrete channel <input type="checkbox"/> Earthen <input type="checkbox"/> Rip-rap <input type="checkbox"/> Other: _____	<input type="checkbox"/> Trapezoid <input type="checkbox"/> Parabolic <input type="checkbox"/> Other: _____	Depth: _____ Top Width: _____ Bottom Width: _____	
<input type="checkbox"/> In-Stream	(applicable when collecting samples)			
Flow Present?	<input type="checkbox"/> Yes <input checked="" type="checkbox"/> No		<i>If No, skip to Section 4</i>	
Flow Description	<input type="checkbox"/> Trickle		Depth of Flow: _____ (in.)	

Section 3: Physical Indicators for Flowing Outfalls Only

Are Any Physical Indicators Present in the Flow? Yes No

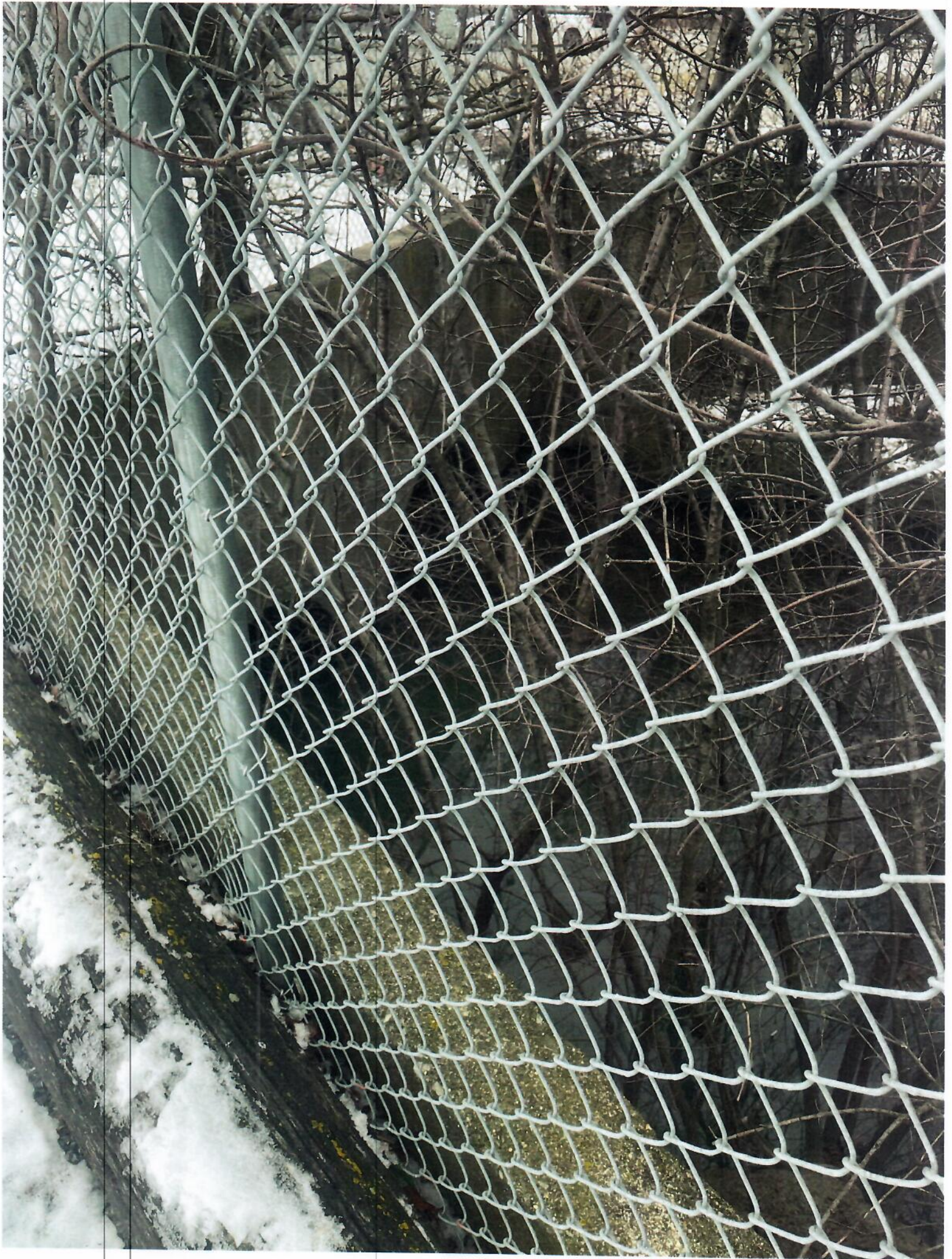
INDICATOR	CHECK IF PRESENT	DESCRIPTION	RELATIVE SEVERITY INDEX (1-3)		
Odor	<input type="checkbox"/>	<input type="checkbox"/> Sewage <input type="checkbox"/> Rancid/sour <input type="checkbox"/> Sulfide <input type="checkbox"/> Other <input type="checkbox"/> Petroleum/gas	<input type="checkbox"/> 1-Faint	<input type="checkbox"/> 2-Easily Detected	<input type="checkbox"/> 3-Noticeable from a distance
Color	<input checked="" type="checkbox"/>	<input type="checkbox"/> Clear <input type="checkbox"/> Brown <input type="checkbox"/> Gray <input type="checkbox"/> Yellow <input checked="" type="checkbox"/> Green <input type="checkbox"/> Orange <input type="checkbox"/> Red <input type="checkbox"/> Other	<input checked="" type="checkbox"/> 1-Faint	<input type="checkbox"/> 2-Clearly Visible in Sample Bottle	<input type="checkbox"/> 3-Clearly Visible in Outfall Flow
Turbidity	<input type="checkbox"/>	See Severity	<input type="checkbox"/> 1-Slight Cloudy	<input type="checkbox"/> 2-Cloudy	<input type="checkbox"/> 3-Opaque
Floatables	<input type="checkbox"/>	<input type="checkbox"/> Sewage (Toilet Paper, etc.) <input type="checkbox"/> Suds <input type="checkbox"/> Petroleum (oil sheen) <input type="checkbox"/> Other:	<input type="checkbox"/> 1-Few /Slight; Origin not Obvious	<input type="checkbox"/> 2-Some; Indication of Origin (e.g. possible suds or oil sheen)	<input type="checkbox"/> 3-Some; Origin Clear (e.g. obvious oil sheen, suds or floating sanitary)

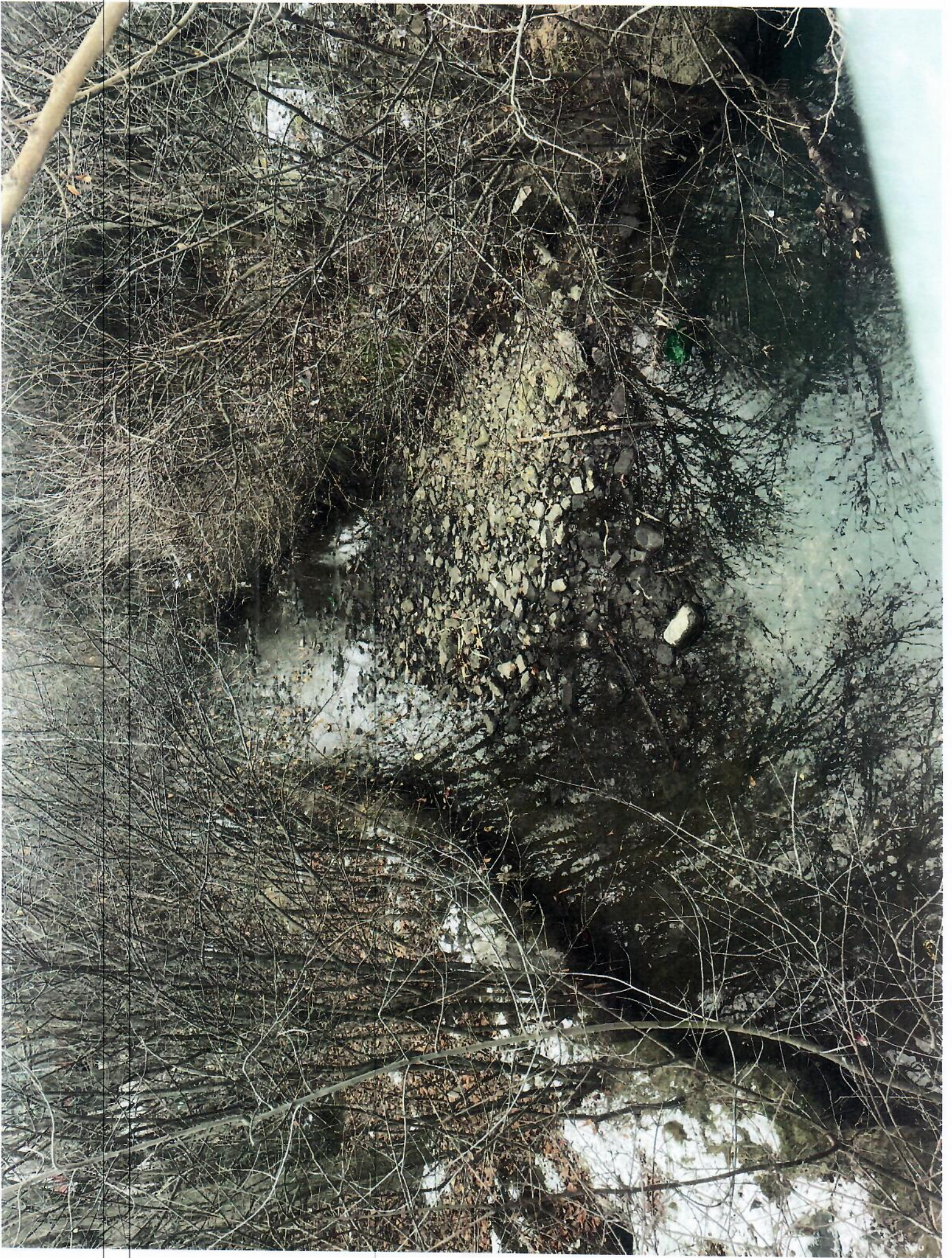
Section 4: Physical Indicators for Both Flowing and Non-Flowing Outfalls

Are Any Physical Indicators Present in the Flow? Yes No

INDICATOR	CHECK IF PRESENT	DESCRIPTION	COMMENTS
Outfall Damage	<input type="checkbox"/>	<input type="checkbox"/> Spalling, Cracking or Chipping <input type="checkbox"/> Peeling Paint <input type="checkbox"/> Corrosion	
Deposits/Stains	<input type="checkbox"/>	<input type="checkbox"/> Oily <input type="checkbox"/> Flow Line <input type="checkbox"/> Paint <input type="checkbox"/> Other:	
Abnormal Vegetation	<input checked="" type="checkbox"/>	<input checked="" type="checkbox"/> Excessive <input type="checkbox"/> Inhibited	<u>Bushes and trees</u>
Poor Pool Quality	<input type="checkbox"/>	<input type="checkbox"/> Odors <input type="checkbox"/> Colors <input type="checkbox"/> Floatables <input type="checkbox"/> Oil Sheen <input type="checkbox"/> Suds <input type="checkbox"/> Excessive Algae <input type="checkbox"/> Other:	
Algae	<input type="checkbox"/>	<input type="checkbox"/> Brown <input type="checkbox"/> Orange <input type="checkbox"/> Green <input type="checkbox"/> Other:	







DRY WEATHER VISUAL INSPECTION FORM

Section 1: Background Data



Dry Weather inspections are to be performed at least 72 hours after any rainfall has occurred

Pond / Watercourse Name: <u>Stony Creek</u>		Structure / ID: <u>95th / 294 entry</u>	
Today's date: <u>12-23-2024</u>		Time (Military):	
Investigators: <u>Danny Green</u>		Form completed by: <u>Danny Green</u>	
Temperature (°F): <u>36°</u>	Rainfall (in.): 0.00	Last 72 hours: 0.00	Last 96 hours:
Latitude:	Longitude:	GPS Unit:	GPS LMK #:
Camera: <u>see attached</u>		Photo #s:	
Land Use in Drainage Area (Check all that apply):			
<input type="checkbox"/> Commercial		<input type="checkbox"/> Residential	
<input type="checkbox"/> Open Space		<input type="checkbox"/> Industrial	
<input type="checkbox"/> Other: _____		Known Industries: _____	
Notes (eg., origin of outfall, if known):			

Section 2: Outfall / Location Description

TYPE	MATERIAL	SHAPE	DIMENSIONS (IN.)	SUBMERGED
<input checked="" type="checkbox"/> Pipe	<input checked="" type="checkbox"/> RCP <input type="checkbox"/> CMP <input type="checkbox"/> PVC <input type="checkbox"/> HDPE <input type="checkbox"/> Steel <input type="checkbox"/> Other: _____	<input type="checkbox"/> Circular <input type="checkbox"/> Elliptical <input type="checkbox"/> Box <input type="checkbox"/> Other: _____	<input type="checkbox"/> Flared End <input type="checkbox"/> Concrete Headwall <input type="checkbox"/> Pipe <input type="checkbox"/> Concrete Slope Wall <input type="checkbox"/> Other: _____	Diameter / Dimensions: _____ In Water: <input checked="" type="checkbox"/> No <input type="checkbox"/> Partially <input type="checkbox"/> Fully With Sediment: <input checked="" type="checkbox"/> No <input type="checkbox"/> Partially <input type="checkbox"/> Fully
<input type="checkbox"/> Manhole / Catch Basin / Inlet	<input type="checkbox"/> Concrete channel <input type="checkbox"/> Earthen <input type="checkbox"/> Rip-rap <input type="checkbox"/> Other: _____	<input type="checkbox"/> Trapezoid <input type="checkbox"/> Parabolic <input type="checkbox"/> Other: _____	Depth: _____ Top Width: _____ Bottom Width: _____	
<input type="checkbox"/> In-Stream	(applicable when collecting samples)			
Flow Present?	<input type="checkbox"/> Yes <input checked="" type="checkbox"/> No <i>If No, skip to Section 4</i>			
Flow Description	<input type="checkbox"/> Trickle <input type="checkbox"/> Depth of Flow: _____ (in.)			

Section 3: Physical Indicators for Flowing Outfalls Only

Are Any Physical Indicators Present in the Flow? Yes No

INDICATOR	CHECK IF PRESENT	DESCRIPTION	RELATIVE SEVERITY INDEX (1-3)		
Odor	<input type="checkbox"/>	<input type="checkbox"/> Sewage <input type="checkbox"/> Rancid/sour <input type="checkbox"/> Sulfide <input type="checkbox"/> Other <input type="checkbox"/> Petroleum/gas	<input type="checkbox"/> 1-Faint	<input type="checkbox"/> 2-Easily Detected	<input type="checkbox"/> 3-Noticeable from a distance
Color	<input type="checkbox"/>	<input type="checkbox"/> Clear <input type="checkbox"/> Brown <input type="checkbox"/> Gray <input type="checkbox"/> Yellow <input type="checkbox"/> Green <input type="checkbox"/> Orange <input type="checkbox"/> Red <input type="checkbox"/> Other	<input type="checkbox"/> 1-Faint	<input type="checkbox"/> 2-Clearly Visible in Sample Bottle	<input type="checkbox"/> 3-Clearly Visible in Outfall Flow
Turbidity	<input type="checkbox"/>	See Severity	<input type="checkbox"/> 1-Slight Cloudy	<input type="checkbox"/> 2-Cloudy	<input type="checkbox"/> 3-Opaque
Floatables	<input type="checkbox"/>	<input type="checkbox"/> Sewage (Toilet Paper, etc.) <input type="checkbox"/> Suds <input type="checkbox"/> Petroleum (oil sheen) <input type="checkbox"/> Other: _____	<input type="checkbox"/> 1-Few /Slight; Origin not Obvious	<input type="checkbox"/> 2-Some; Indication of Origin (e.g. possible suds or oil sheen)	<input type="checkbox"/> 3-Some; Origin Clear (e.g. obvious oil sheen, suds or floating sanitary)

Section 4: Physical Indicators for Both Flowing and Non-Flowing Outfalls

Are Any Physical Indicators Present in the Flow? Yes No

INDICATOR	CHECK IF PRESENT	DESCRIPTION	COMMENTS
Outfall Damage	<input type="checkbox"/>	<input type="checkbox"/> Spalling, Cracking or Chipping <input type="checkbox"/> Peeling Paint <input type="checkbox"/> Corrosion	
Deposits/Stains	<input type="checkbox"/>	<input type="checkbox"/> Oily <input type="checkbox"/> Flow Line <input type="checkbox"/> Paint <input type="checkbox"/> Other: _____	
Abnormal Vegetation	<input checked="" type="checkbox"/>	<input checked="" type="checkbox"/> Excessive <input type="checkbox"/> Inhibited	<u>Bushes and tall grass</u>
Poor Pool Quality	<input type="checkbox"/>	<input type="checkbox"/> Odors <input type="checkbox"/> Colors <input type="checkbox"/> Floatables <input type="checkbox"/> Oil Sheen <input type="checkbox"/> Suds <input type="checkbox"/> Excessive Algae <input type="checkbox"/> Other: _____	
Algae	<input type="checkbox"/>	<input type="checkbox"/> Brown <input type="checkbox"/> Orange <input type="checkbox"/> Green <input type="checkbox"/> Other: _____	











